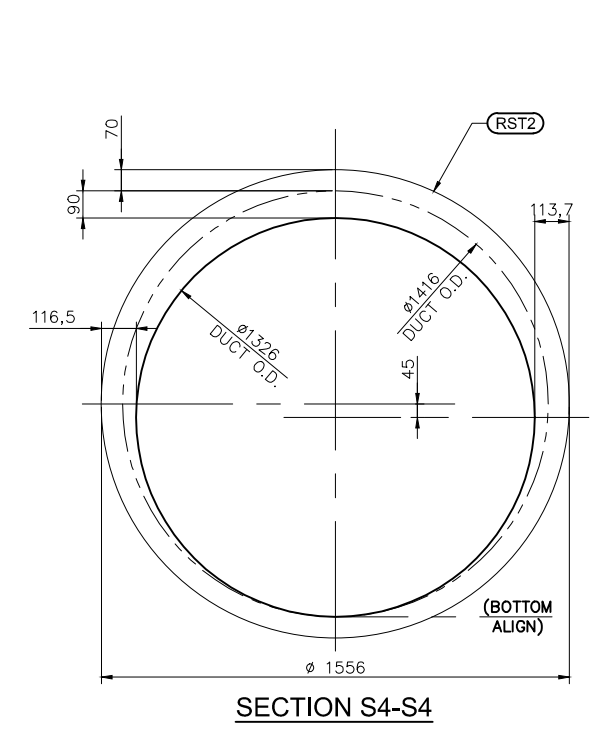
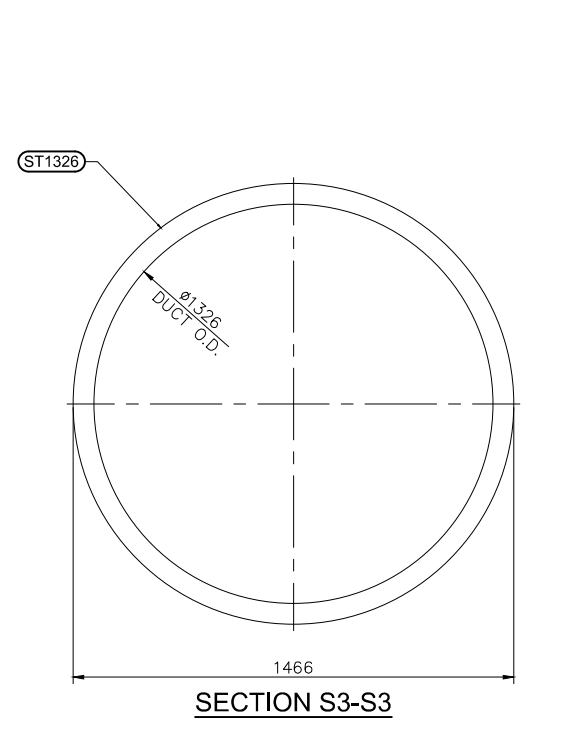
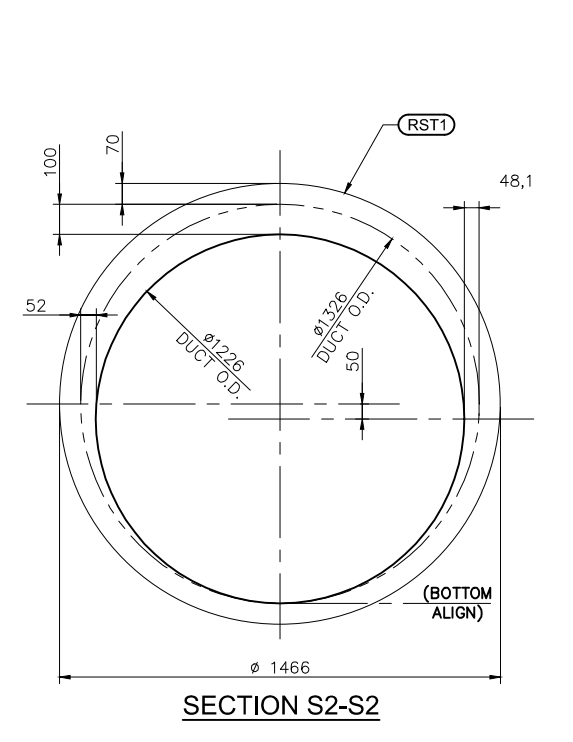
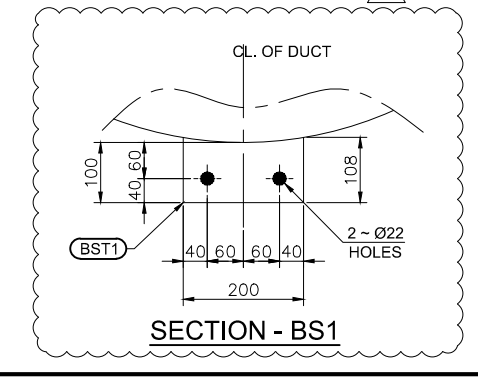
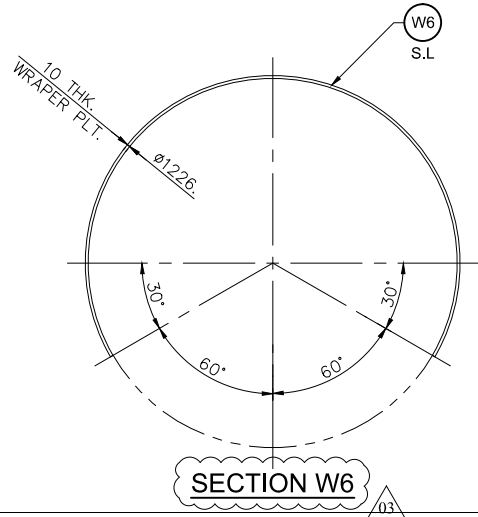
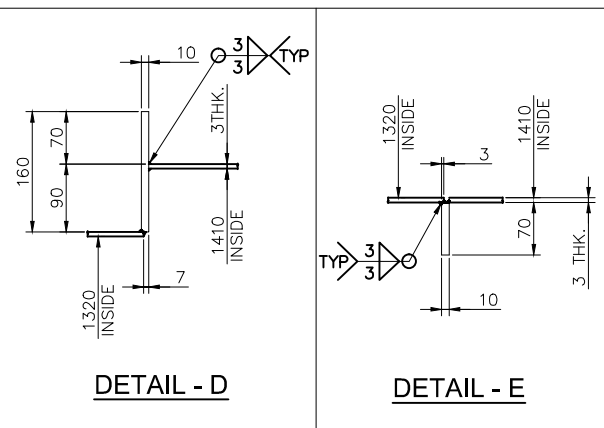


MATERIAL LIST						
ERECTION Mark	Mark	Size	Grade	Qty.	Length	Weight
ASSEMBLY MK'D 32WL-PD1 QTY. 2 NOS. REQ'D.	D1	PL 3 THK. x 2668	S235 JR	1	3844	244.00
	D2	PL 3 THK. x 4158	S235 JR	1	6293	621.00
	D3	PL 3 THK. x 2735	S235 JR	1	4441	288.00
	W6	PL 10 THK. x 70	S235 JR	1	2589	15.00
	RST1	REF. DWG. # 9.9M-1314	S235 JR	1	REDUCING STIFFENER	67.00
	RST2	REF. DWG. # 9.9M-1314	S235 JR	1	REDUCING STIFFENER	70.00
	ST1326	REF. DWG. # 9.9M-1315	S235 JR	1	RING STIFFENER	48.00
	SP5/ST1416	REF. DWG. # 9.9M-1316	-	1	SLIDING SUPPORT	259.00
	IN1	REF. DWG. # 9.9M-1313	S235 JR	1	PRESSURE DROP INSERT	114.00
	RD2	REF. DWG. # 9.9M-1335	S235 JR	1	REDUCER	54.00
	BST1	PL 10 THK. x 108	S235 JR	2		4.00
<b>TOTAL</b>					<b>1790.00 KG.</b>	

G. TOTAL- 3580.00 KGs.



GENERAL NOTES:  
 1. ALL DIMENSIONS ARE IN MM, AND ALL LEVELS ARE IN M.  
 2. ALL WELDS ARE 3 MM CONTINUOUS FILLET WELD, U.N.O.  
 3. ALL SHARP EDGES TO BE REMOVED.  
 4. S.L. - SHIP LOOSE

REV	DATE	DESCRIPTION	DRAWN	CHECKED	APPROVED
03	28-05-12	REVISED AS MARKED	SCAD	SCAD	JLK
02	24-04-12	REVISED AS MARKED	SCAD	SCAD	JLK
01	22-03-12	ISSUED FOR FABRICATION	SCAD	SCAD	JLK

**ALSTOM** Power Environment  
 Environmental Control Systems

Competence Center, Aluminium

© This document is, unless otherwise agreed in writing, the property of ALSTOM Norway AS, and shall not be reproduced, copied, disclosed to any third party or used for any other purpose other than that for which it is supplied or disclosed.

EMAL PHASE II - GAS TREATMENT CENTRES (GTC) GTC-5332  
 DETAILS OF POTROOM DUCT 32WL-PD1

Date	22-03-2012	Drawn by	SCAD	Checked by	SCAD	Approved	JLK	Assembly No.	9.9M-1278	Sub No.		Scale	1:25
REV.	DATE	DESCRIPTION											

Drawing No. EE3-000567 - 9.9M-1312

Rev. 03

Last Print Date: \$DATE\$ \$TIMES\$ \$FILES\$

D	28-05-2012	REVISED AS MARKED
C	24-04-2012	REVISED AS MARKED
B	22-03-2012	ALSTOM COMMENTS INCORPORATED
A	19-03-2012	ISSUED FOR APPROVAL
REV.	DATE	DESCRIPTION

**Icon**  
 Integrated Steel Construction Co. L.L.C.